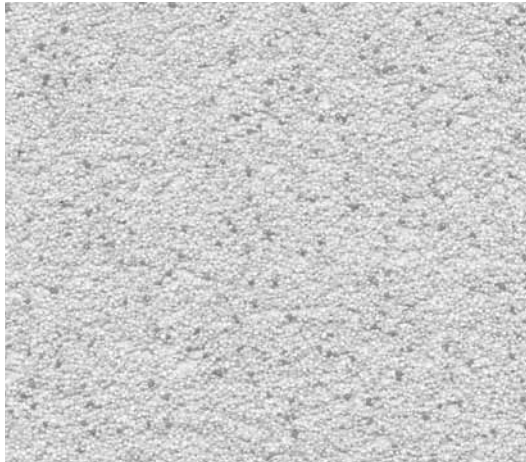




Cerastone® | Spraystone | Tuffstone Granite

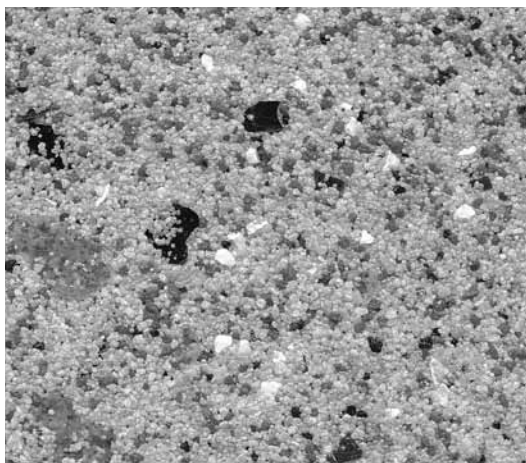
Specialty Stone Finishes



CERASTONE®



SPRAYSTONE



TUFFSTONE GRANITE



DESCRIPTION:

- An attractive, multi-color wall finish made of colored aggregates
- Clear 100% Acrylic vapor-permeable binder
- Can be used in interior and exterior application
- Ideal for high traffic interior areas
- A highly durable, scratch-resistant finish
- Easily repaired

USES:

Exterior finish coat over:

- Properly prepared stucco, masonry, brick, concrete, and EIFS surfaces.

Interior finish coat over:

- Drywall, plaster or properly prepared masonry or concrete.
- For improved cleanability on the Cerastone, Spraystone or Tuffstone Granite, concrete, and EIFS surfaces, the Matte Clear Sealer can be applied to protect the surface.

COMPOSITION:

- Binder Base: Acrylic copolymer
- Aggregate: colored quartz aggregates, mica (Tuffstone Granite)
- Water-based: VOC compliant
- Color: Standard colors for Cerastone®, Spraystone, Tuffstone Granite

Select Finish

COVERAGE:

Depending on the condition of the substrate and method of application, approximate coverages are:

Cerastone®

- Including both the troweled and the sprayed coats: 90 - 120 ft² (8.2 - 11 m²)/5 gal pail
- Troweled tight coat alone: 140 - 200 ft² (12.8 - 18.3 m²)/5 gal pail
- Fine spray alone: 250 - 300 ft² (23 - 27.5 m²)/5 gal pail

Spraystone

- 70 - 110 ft² (8.2 - 11 m²)/5 gal pail

Tuffstone Granite

- 75 - 100 ft² (7.0 - 9.3 m²)/5 gal pail

CONTAINER:

Cerastone and Spraystone

– 65 lbs (29.5 kg) net weight in 5 gal pail

Tuffstone Granite

– 60 lbs (27.2 kg) net weight in 5 gal pail

- **Storage:** Protect from direct sunlight and freezing at all times
 - Do not stack pails more than 3 pails high
- **Shelf Life:** One year if properly stored in the original packaging.

DRYING TIME:

24 hours under normal conditions. High humidity and low temperatures extend drying time.

CLEAN-UP:

Water soluble prior to drying. Clean tools and containers with water prior to drying.

SURFACE PREPARATION:

- Remove surface contaminants such as dust or dirt without damaging the substrate.
- For previously painted surfaces, all loose and chalking paint must be removed and glossy surfaces dulled.
- New concrete and masonry must be clean and cured a minimum of 28 days.
- Check concrete surfaces for alkalinity and treat. Any form-release agents or bond breakers must be removed.
- Uneven concrete or masonry can be leveled with Stucco Level Coat or other suitable, compatible product.

- For interior drywall, prepare as for painting.
- To ensure the consistency of the Select Finish color, apply a coat of tinted Sanded Primer to all surfaces to receive the Select Finish. For more information see technical bulletin "Primer under Cerastone & Spraystone Finishes".
- For application of Sanded Primer, refer to the Product Data Sheet.
- For additional options, contact Parex USA Technical Support.

MIXING:

- Use clean equipment for mixing and preparation.
- Stir to obtain a homogeneous consistency using a heavy duty 1/2 in. (13mm) drill with a rust-free paddle at 400-500 rpm. Avoid air entrainment.
- A small amount of cool clean, potable water may be added to aid workability. Do not exceed 16 oz. (0.5 L) per full pail of finish. To avoid texture variations, add the same amount of water to each pail of finish.

APPLICATION:

- Read the entire label before using this product.
- For Cerastone®: use a clean stainless steel trowel and apply a uniform coat slightly thicker than the aggregate size. Level the material using a stainless steel trowel slicking the material tight. The slicking motion should be done in one direction only. Do not flat float.
- Apply fine spray of Cerastone® evenly over the troweled Cerastone® layer for a more uniform texture and reduced appearance of gloss.
- For Spraystone: spray the first coat of Spraystone over the primed surface. Spraystone may be sprayed by hopper gun or others suitable plaster spray equipment (Cerastone® can be applied in this manner as well, especially for large surfaces). Use air pressure approximately 15 - 25 psi. If aggregate bounces back off the wall, the air pressure is too high. A second coat of sprayed Spraystone may be needed to achieve the desired look.
- For Tuffstone Granite: apply to an even layer, using a clean, stainless steel trowel. Work the trowel in a single direction to make a smooth surface. Lightly float the surface using a clean plastic float or stainless steel trowel several times. This will bring the large mica to the surface and enhance the granite appearance.

For all Select Finishes

- Always maintain a wet edge and work to the corners or joints.
- For best color consistency, use finish with the same batch number within a wall section.
- Keep container closed when not in use.

LIMITATIONS:

- Ambient and surface temperature must be 50°F (10°C) or higher during application and drying time. Supplemental heat and protection from precipitation must be provided as needed.
- Use only on surfaces that are sound, clean, dry, unpainted and free from any residue which may affect the ability of the finish to bond to the surface.
- Application in direct sunlight in hot weather may adversely affect aesthetics.
- Due to the nature of the raw materials used in this product, all material should be ordered at the same time to avoid color matching problems. Parex USA cannot assure color combinations will match between batches made at different times.
- Do not use as waterproofing. Do not use below grade.
- Do not use directly over foam plastic, gypsum board, or other insulation type boards.
- Do not apply in a thickness greater than 1/8 in. (3 mm).
- Must not be used on exposed exterior horizontal surfaces. Minimum slope is 27° or 6:12 inches.
- Do not use on surfaces subject to hydrostatic pressure or continuous or intermittent water immersion.
- Avoid application over damp surface or in excessively humid conditions. Finish may become milky in color after it gets wet. This should dissipate with subsequent wetting and drying cycles.

WARNING:

- Read complete warning information printed on product container prior to use. For medical emergency information, call 1-800-424-9300.
- For more information on handling this product refer to its Material Safety Data Sheet (MSDS). The most current MSDS and Product Data Sheet (PDS) can be found on our website.
- This Product Data Sheet has been prepared in good faith on the basis of information available at the time of publication. It is intended to provide users with information about the guidelines for the proper use and application of the covered product(s) under normal environmental and working conditions. Because each project is different, Parex USA, Inc. cannot be responsible for the consequences of variations in such conditions, or for unforeseen conditions.

PAREXUSA
www.parexusa.com

Corporate Office

Parex USA, Inc.
4125 E. La Palma Ave., Suite 250
Anaheim, CA 92807
(866) 516-0061
Tech Support: (800) 226-2424

Facilities

Redsn, GA
Riverside, CA
French Camp, CA
Colorado Springs, CO
Albuquerque, NM
San Antonio, TX
Wilkes Barre, PA
Ft. Pierce, FL

