



Smooth **Coarse**
Fine **Swirl Fine**
Medium **MaxTex**
 Perma-Flex Lastic Finishes

Test	Method	Criteria	Results
Abrasion Resistance*	ASTM D968	1,000 liters of sand	Pass
Accelerated Weathering	ASTM G23	2000 Hours	No chalking, cracking, checking, crazing or erosion.
Flexibility (Mandrel Bend)	ASTM D52	0.5" mandrel bend at -4F 0.5" mandrel bend at 32F 0.5" mandrel bend at 70F	Pass Pass Pass
Freeze/Thaw Resistance*	ASTM E2485-06	10 cycles	Pass: No chalking, cracking, checking, crazing or erosion.
Mold Resistance*	ASTM D3273	35 days	Pass: No Growth.
Fungus Resistance	MIL 810 B508	28 days	Pass: No Growth.
Scrub Resistance	ASTM D2486	No requirements	Pass at 10,000 Cycles +
Water Vapor Permeability	ASTM D1653	28 days	Water permeable; does not create a vapor barrier.
VOC	EPA Reference Test Method 24	US EPA, South Coast AQMD and Greenseal Standard	20 g/L

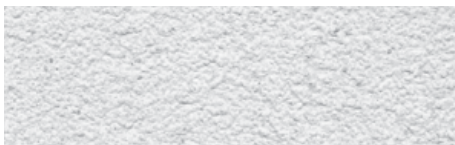
*Tested with El Rey Basecoat



SMOOTH



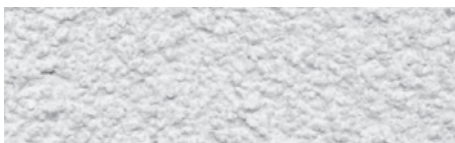
COARSE



FINE



SWIRL FINE



MEDIUM



MAXTEX

DESCRIPTION

- 100% acrylic-based elastomeric textured finish.
- Dirt Pick-up Resistance (DPR): The surface of the finish hardens and does not soften again under heat. The non-tacky surface provides high resistance to accumulation of dirt, mold and pollutants.
- Highly flexible: Can bridge pre-existing or existing hairline cracks.
- Integrally colored with high quality pigments.

USES:

Exterior finish coat over:

- El Rey Insul-Flex EIFS, Fiber-47 Scratch & Brown Sanded, Fiber-47 Scratch & Brown Concentrate, Fastwall Sanded and Fastwall Concentrate.
- New or existing stucco and concrete surfaces.
- Renovation of old stucco and concrete walls.
- Finishing of masonry walls in combination with any El Rey Insul-Bond Basecoat & Adhesive as leveler

COMPOSITION:

- Binder base: 100% acrylic polymer with surface-hardening property.
- Aggregate: Pure crushed marble, rust-free.
- Water based: VOC-Compliant
- Pigment base: Titanium dioxide.
- Color: Parex USA standard colors or tinted to desired custom color. Meets SCAQMD Rule 1113 when using Parex USA Non-VOC Colorants.

CONTAINER:

- 60 lb (27.2 kg) net weight in plastic pails.
- Storage: Protect from direct sunlight and freezing at all times.
- Do not stack pails more than 3 pails high
- Shelf Life: Reference Parex USA Expiration Date of Products Technical Bulletin.

COVERAGE:

Depending on the condition of the substrate and method of application, approximate coverages per pail are:

Smooth

Aggregate size: 0.25mm
130–140 ft² (12.1–13 m²)

Fine

Aggregate size: 0.5mm
130–140 ft² (12.1–13 m²)

Medium

Aggregate size: 1.0mm
120–130 ft² (11.1–12 m²)

Coarse

Aggregate size: 1.5mm
80–100 ft² (7.4–9.3 m²)

Swirl Fine

Aggregate size: 1.5mm
100–120 ft² (9.3–11.1 m²)

MaxTex

Aggregate size: 1.25mm
110–120 ft² (10.2–11.1 m²)
Coverage varies due to texture.

DRYING TIME:

48 hours under normal conditions. High humidity and low temperatures extend drying time.

CLEAN-UP:

Water soluble prior to drying. Clean tools and containers with water prior to drying.

SURFACE PREPARATION:

- Remove surface contaminants such as dust or dirt without damaging the substrate.
- For previously painted surfaces, all loose and chalking paint must be removed, and glossy surfaces dulled.
- New concrete and masonry must be clean and cured a minimum of 28 days.
- Portland Cement Plaster must be clean and cured a minimum of 7 days or in accordance with El Rey Specifications
- Check concrete surfaces for alkalinity and treat. Any form-release agents or bond breakers must be removed.
- Uneven concrete or masonry can be leveled with any El Rey Insul-Bond Basecoat & Adhesive, Parex USA Stucco Level Coat or other suitable compatible product.
- It is recommended that El Rey Perma-Flex 400 Surface Conditioner be applied to all portland cement-based substrates before applying acrylic stucco finish. Prior to commencing work, always apply a small jobsite sample to check color and texture.

- For interior drywall, prepare as for painting. Minimum level 3 drywall finish.
- Parex USA recommends the use of primers to enhance the appearance and uniformity of the finish, improved coverage, and decrease the chance of efflorescence. This is especially true when using dark colors or finishes with a large aggregate. If specified, prime with Parex USA Primer or Variance VariPrime Sanded, refer to Product Data Sheet.
- For additional options, contact Parex USA Technical Support.

MIXING:

- Use clean equipment for mixing and preparation.
- Stir to obtain a homogeneous consistency using a heavy-duty 1/2 in. (13mm) drill with a rust-free paddle at 400–500 rpm. Avoid air entrainment.
- If not pre-tinted, add liquid color to the pail of finish. Make sure all of the color is added by rinsing out the color vial with water (1/3 of the vial's volume) into the pail.
- Add the amount of water needed to achieve finish texture. To avoid color and texture variations, add the same amount of water to each pail of finish. Do not exceed 24 oz. (0.7) L per full pail of finish.

APPLICATION:

- Read the entire label before using this product
- Always maintain a wet edge and work to corners or joints. For best color consistency, use finish with the same batch number within a wall section.
- Keep container closed when not in use.
- Use a clean stainless steel trowel and apply a uniform coat the thickness of the largest aggregate size of the finish.
- Texturing Swirl Fine, Fine, Medium, MaxTex and Coarse Finishes: Use a clean plastic float or stainless steel trowel. A plastic float will roll the large aggregates more than a stainless steel trowel. Continuously dry clean the plastic float or steel trowel while texturing. Use consistent pressure and motion to achieve the desired texture.
- Texturing Smooth Finish:
 - Optional: Level stucco brown coats with any El Rey Insul-Bond Basecoat & Adhesive, Level Coat, or other suitable,

compatible product and let dry prior to finish application.

- Smooth Finish cannot generally be floated. Texture will be "as trowelled."
- Smooth Finish can be trowelled smooth to simulate the texture of limestone.
- For smoothest application, apply in two tight coats. Allow first coat to dry enough that it will not be disturbed during application of the second coat. When second coat is partially dry, trowel to desired smoothness. Light, consistent misting with water during smoothing will increase smoothness. Variations in color tint and smoothness should be expected.
- Spray application: To achieve consistent texture, spray application must use consistent motion, pressure, distance and spray angle. A job-site mock up for spray application is advised.

LIMITATIONS:

- Ambient and surface temperature must be 40°F (4°C) or above during application and drying time. Supplemental heat and protection from precipitation must be provided as needed.
- Use only on surfaces that are sound, clean, dry, unpainted and free from any residue which may affect the ability of the finish to bond to the surface.
- Application in direct sunlight in hot weather may adversely affect aesthetics.
- Parex USA is not responsible for color correctness after finish has been applied.

WARNING

- Read complete Warning information printed on product container prior to use. For medical emergency information, call 1-800-424-9300.
- For more information on handling this product refer to its Safety Data Sheet (SDS). The most current SDS and Product Data Sheet (PDS) can be found on our website.
- This Product Data Sheet has been prepared in good faith on the basis of information available at the time of publication. It is intended to provide users with information about the guidelines for the proper use and application of the covered product(s) under normal environmental and working conditions. Because each project is different, Parex USA, Inc. cannot be responsible for the consequences of variations in such conditions, or for unforeseen conditions.

Parex USA, Inc.
4125 E. La Palma Ave., Suite 250
Anaheim, CA 92807
(866) 516-0061 Tech Support: (800) 226-2424

Facilities
French Camp, CA
North Hollywood, CA
Riverside, CA
San Diego, CA

Colorado Springs, CO
Haines City, FL
Duluth, GA
Redan, GA

Albuquerque, NM
Allentown, PA
San Antonio, TX



PAREXUSA
SUSTAINABILITY